

The Kwikset logo is displayed in white, bold, italicized sans-serif font on a red rectangular background.

SYDNEY™ LEVER

The Sydney lever with its soft arch was purposefully designed for ergonomic comfort without sacrificing style. Its dynamic arched design complements both linear and round decor elements. The graceful curve of the Sydney lever blends well with transitional and contemporary design styles.

- Reversible lever fits both left and right-hand doors.
- Available with a round or square rose.
- ANSI/BHMA Grade 2 Certified



Sydney™ Lever
in Venetian Bronze



Sydney™ Lever
in Venetian Bronze

#1 SELLING U.S. LOCK BRAND*

*Source: TraQline US quarterly brand unit share report, Q4 2006 through Q1 2020

Specifications

Door Prep	Cross Bore 2 1/8" or 1 1/2". Edge Bore 1" Latch Face 1" x 2 1/4".
Backset	Adjustable 2 3/8" or 2 3/4"
Door Thickness	1 3/8" - 1 3/4" Doors standard. Thick door service part available for up to 2 1/4".
Cylinder	SmartKey Security™
Faceplates	1" x 2 1/4" Specify round corner, square corner or drive-in.
Strikes	2 1/4" Full lip square or round corner
Rose	Specify round or square.

Bolt	1/2" throw.
Door Handling	Reversible for right or left handed doors.
ANSI/BHMA	Grade 2 Certified.
UL	20 Min UL fire rating available upon request; passage, privacy and entry functions.
ADA	Functions 154, 155, 156 are in compliance with the American National Standards Institute (ANSI A117.1) and the Americans with Disabilities Act (ADA).
Warranty	Lifetime Mechanical and Lifetime Finish

Functions



154 Passage/Hall/Closet: Both levers always free.



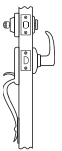
155 Privacy/Bed/Bath: Both levers locked or unlocked by push-button inside. Outside lever unlocked by emergency key.



156 Keyed Entry Lever: Both sides locked or unlocked by key outside or push-button inside.

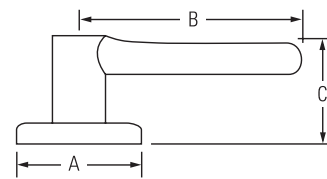


157 Half Dummy Trim, Surface Mounted: For doors where only a pull is required. No operation.



966 Interior Pack: Outside handleset. Inside lever.

Dimensions



Design	A	B	C	C (Keyed)
Sydney™ Round Rose	2 5/8" (67 mm)	4 1/4" (108 mm)	2 3/4" (70 mm)	2 3/8" (60 mm)
Sydney™ Square Rose	2 5/8" (67 mm)	4 1/4" (108 mm)	2 3/4" (70 mm)	2 3/8" (60 mm)

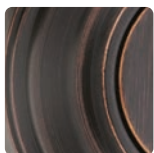


Sydney™ Lever
in Satin Chrome



Sydney™ Lever
in Satin Chrome

Finishes



Venetian
Bronze **11P**



Satin
Nickel **15**



Polished
Chrome **26**



Satin
Chrome **26D**



Matte
Black **514**

LIFETIME
WARRANTY