

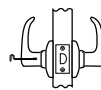
Specifications

Door Prep	Cross Bore 2-1/8". Edge bore 1".
Backset	Adjustable 2-3/8" or 2-3/4". UL functions 2-3/4" standard or 2-3/8" optional.
Door Thickness	1-3/8" - 1-3/4" Doors standard.
Cylinder	SmartKey Security™ or Traditional 5-pin Pin & Tumbler
Faceplates	1" x 2-1/4" Specify round corner or square corner. Also available as drive-in latch.
Strikes	2-1/4" Full lip standard. Specify round corner, square corner. Other options available.
Bolt	1/2" Throw
ANSI/BHMA	A156.2 Grade 3 (all functions except 488)
ADA	200 function satisfies section 4.13.9 ADA requirements.
UL	Meets 3-hour fire rating for all UL specific functions.

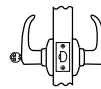
Functions



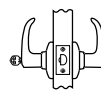
Passage/Hall/Closet: Both levers always free



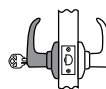
Privacy/Bed/Bath: Both levers locked or unlocked by turnbutton inside. Outside lever unlocked by emergency key



Keyed Entry Lever: Both sides locked or unlocked by key outside or turnbutton inside



Free Interior: Outside locked or unlocked by key outside or turn button inside. Inside always free.

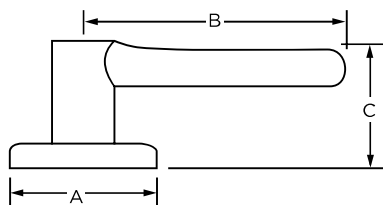


Storeroom/Vestibule: Outside unlocked only while key is turned. Inside always free



Half Dummy Trim, Surface Mounted: For doors where only a pull is required. No operation

Dimensions



Design	A	B	C	C (Keyed)
Delta™	2 5/8"	3 5/8"	1 7/8"	2 5/8"



Delta™ Lever
in Satin Nickel



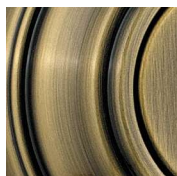
Delta™ Lever
in Venetian Bronze

LIFETIME WARRANTY

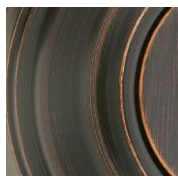
Finishes



Polished
Brass **3**



Antique
Brass **5**



Venetian
Bronze **11P**



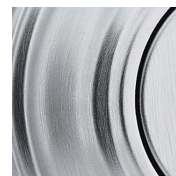
Satin
Nickel **15**



Antique
Nickel **15A**



Polished
Chrome **26**



Satin
Chrome **26D**