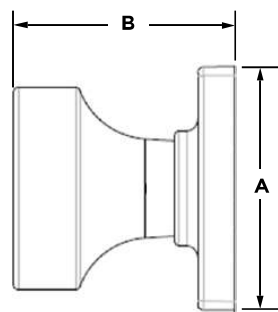


## Specifications

<b>Door Prep</b>	Cross Bore 2 1/8" Edge Bore 1" Latch Face 1 x 2 1/4"
<b>Backset</b>	Adjustable 2 3/8" or 2 3/4"
<b>Door Thickness</b>	1 3/8" - 1 3/4" Doors standard. Thick door service part available for up to 2 1/4"
<b>Cylinder</b>	SmartKey Security™
<b>Faceplates</b>	1" x 2 1/4" Specify round corner, square corner or drive-in
<b>Strikes</b>	1" x 2 1/4" full lip. Specify square or round
<b>Bolt</b>	1/2" Throw
<b>Door Handing</b>	Reversible for right or left-hand doors
<b>ANSI/BHMA</b>	Grade A Certified: Finish/Durability/ Security
<b>UL</b>	Optional 20 Minute UL fire rating available, except inactive functions. 3hr UL rating available for passage function
<b>ADA</b>	N/A
<b>Warranty</b>	Lifetime Mechanical and Lifetime Finish

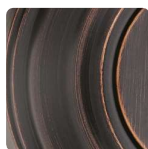
## Dimensions



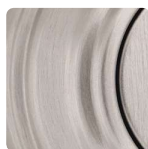
Design	A	B	B (keyed)
SQT	2 5/8"	2 13/32"	2 27/32"
RDT	2 5/8"	2 13/32"	2 27/32"

**LIFETIME**  
WARRANTY

## Finishes



*Venetian  
Bronze* 11P



*Satin  
Nickel* 15



*Polished  
Chrome* 26



*Satin  
Chrome* 26D



*Matte  
Black* 514



**SMARTKEY  
SECURITY™**

**Kwikset's SmartKey Security™** provides homeowners with the superior security that is resistant to a variety of advanced break-in methods.

This technology also allows homeowners to re-key their locks themselves in seconds, rendering lost or un-retuned keys useless.

**Kwikset**

19701 DaVinci, Lake Forest, CA 92610 • Kwikset.com • 1-800-327-5625  
©2020 Spectrum Brands, Inc. Kwikset is a trademark of Spectrum Brands, Inc. Lake Forest, CA 92610 • 330971-06/2020