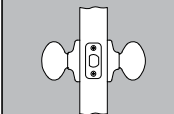
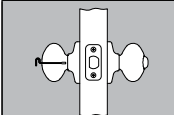
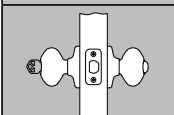
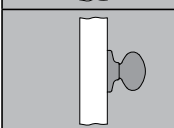


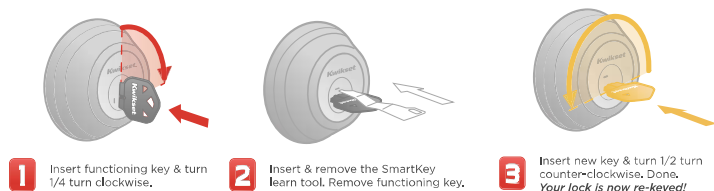
# ALISO™

## Specifications:

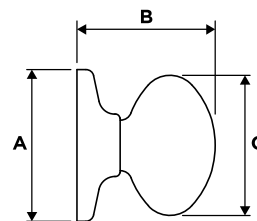
<b>Door Prep</b>	Cross Bore 2 1/8". Edge Bore 1". Latch face 1" x 2 1/4"
<b>Backset</b>	Adjustable to 2 3/8" or 2 3/4"
<b>Door Thickness</b>	1 3/8" - 1 3/4" doors standard
<b>Cylinder</b>	SmartKey™
<b>Faceplates</b>	1" x 2 1/4". Specify 6-way, round corner, square corner, or drive in.
<b>Strikes</b>	2 1/4" full lip standard. Specify round corner, square corner.
<b>Bolt</b>	1/2" throw for all functions.
<b>ANSI/BHMA</b>	A156.2 Grade 3

## Functions:

	<b>Passage/Hall/Closet:</b> Both knobs always free.
	<b>Privacy/Bed/Bath:</b> Both knobs locked or unlocked by turnbutton inside. Outside knob unlocked by emergency key.
	<b>Keyed Entry:</b> Both sides locked or unlocked by key outside or turnbutton inside.
	<b>Half Dummy Trim, Surface Mounted:</b> For doors where only a pull is required. No operation.



## Dimensions:



Design	A	B	C
Aliso™	2 5/8"	2 3/4"	2 2/5"

## Finishes:



Satin Nickel (15)

Venetian Bronze (11P)

Satin Chrome (26)

Polished Brass (3)