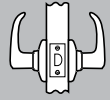
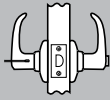
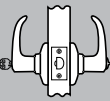
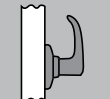


# BALBOA<sup>TM</sup>

## Specifications:

<b>Door Prep</b>	Cross Bore 2 1/8". Edge Bore 1".
<b>Backset</b>	Adjustable to 2 3/8" or 2 3/4"
<b>Door Thickness</b>	1 3/8" – 1 3/4" standard, 2 1/4" doors optional on 200 and 405 functions only
<b>Cylinder</b>	SmartKey® or traditional 5-Pin Pin & Tumbler
<b>Faceplates</b>	1" x 2 1/4". Specify round corner, square corner or drive-in.
<b>Strikes</b>	2 1/4" full lip standard. Specify round corner, square corner. Other options available.
<b>Bolt</b>	1/2" throw.
<b>Door Handing</b>	Reversible for right or left-handed doors. Specify handing only on dummy and handleset interiors only.
<b>ANSI/BHMA</b>	A156.2 Grade 3 (all functions except 488).

## Functions:

	<b>200 Passage/Hall/Closet:</b> Both levers always free.
	<b>300 Privacy/Bed/Bath:</b> Both levers locked or unlocked by turnbutton inside. Outside lever unlocked by emergency key.
	<b>405 Keyed Entry:</b> Both levers locked or unlocked by key outside or turnbutton inside.
	<b>488 Half Dummy Trim, Surface Mounted:</b> For doors where only a pull is required. Must specify right or left hand.

Balboa also available as handleset interior style

## Dimensions:



featuring BumpGuard<sup>TM</sup>:

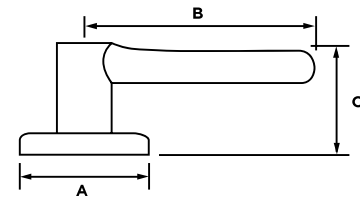
### EASILY RE-KEY IN THREE EASY STEPS



Insert functioning key and turn 1/4 turn clockwise.

Insert and remove the SmartKey learn tool. Remove functioning key.

Insert new key and turn 1/2 turn counter-clockwise. Your lock is now re-keyed!

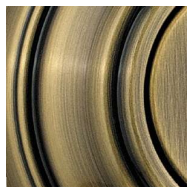


Design	A	B	C	C
Balboa <sup>TM</sup>	2 5/8"	4 1/4"	1 3/16"	2 23/32" (keyed)

## Finishes:



Polished Brass (3)



Antique Brass (5)



Venetian Bronze (11P)



Satin Nickel (15)



**NEW**  
Polished Chrome (26)



Satin Chrome (26D)