

Kwikset

THE SMART SOLUTION FOR ANY SINGLE- OR MULTI-FAMILY PROJECT



780 Deadbolt

- Add to a keyed knob or lever for additional security
- ANSI/BHMA Grade 2 Security
- Fits all standard door preparations
- Lifetime mechanical and finish warranty
- Featuring SmartKey® Re-key Technology
- Patented side locking bar technology

THE BEST SECURITY IS SMART SECURITY.

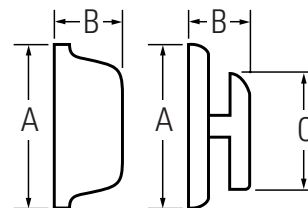
17329

780 Deadbolt

Specifications:

Door Prep	780, 785: Crossbore 2-1/8" or 1-1/2". Edge Bore 1". Latch Face 1" x 2-1/4" 782, 784: Crossbore 2-1/8". Edge Bore 1". Latch Face 1" x 2-1/4"
Backset	Adjustable to 2-3/8" or 2-3/4" standard.
Door Thickness	1-3/8" - 1-3/4" standard. 1-7/8" - 2-1/4" optional.
Cylinder	6-pin removable core or SmartKey.
Faceplates	1" x 2-1/4". Specify round corner or square corner, or drive-in.
Strikes	1-1/4" x 3-5/8". Specify round corner or square corner. Other options available.
Bolt	1" throw.
Door Handing	Reversible for right or left-hand doors.
ANSI/BHMA	Grade 2 Certified.
ADA	Interior turn piece meets 4.13.9 ADA requirements.
UL	Meets UL 3 hour fire rating for 782 and 784. Optional UL 1/3 hour fire rating for all functions.*

Dimensions:

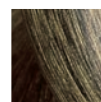


Design	A	B	C (Keyed)
780, 782 Interior	2 1/2"	15/16"	1 25/32"
780, 782 Exterior	2 5/8"	1 1/8"	
784, 785 Interior	2 5/8"	1 1/8"	
784, 785 Exterior	2 5/8"	1 1/8"	

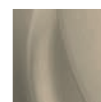
Available Finishes:



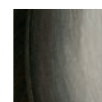
3
*Polished
Brass*



5
*Antique
Brass*



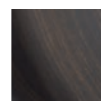
15
*Satin
Nickel*



15A
*Antique
Nickel*



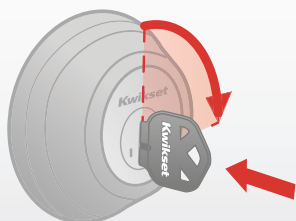
26D
*Satin
Chrome*



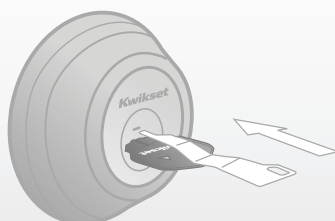
11P
*Venetian
Bronze*

HOW SMARTKEY WORKS

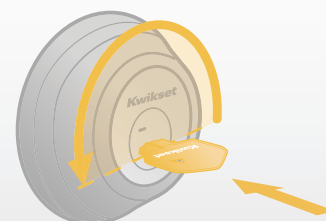
Re-key as Easy as 1-2-3



1 Insert functioning key & turn 1/4 turn clockwise.



2 Insert & remove the SmartKey learn tool. Remove functioning key.



3 Insert new key & turn 1/2 turn counter-clockwise. Done.
Your lock is now re-keyed!



Functioning Key



SmartKey Learn Tool



New Key

! You must have your functioning key & the learn tool for the system to work.